

PRODUCT SPECIFICATION

Key Features

- > Wood, concrete & abstract designs
- > 19dB acoustic performance
- > High resistance to abrasion
- > Low VOC emissions
- > Suitable for commercial interiors



Product Format	Standard	Result
Gauge	ISO 24346 (EN 428)	3.7mm
Wear Layer	ISO 24340 (EN 429)	0.7mm
Total Weight	ISO 23997 (EN 430)	2550g/m ²
Finish		PUR

Sheet Size	Size	Shades	Quantity per Box	Coverage per Box/Roll
Sheet	2m x 20m	34	-	40m ²

Performance Requirements	Standard	Result
General Performance	ISO 11638 (EN 651) ASTM F1303	Conforms Type I, Grade I, Class C Backing
Use Area	ISO 10874 (EN 685)	23, 34, 42
Slip Resistance	EN 13893 DIN 51130 / DIN EN 16165 Ann. B AS 4586 ASTM D2047	Class DS R10 R10 SCOF ≥0.5
Binder Content	ISO 10582	Type I
Abrasion Resistance	EN 651	Group T
Reaction to Fire	EN 13501-1 ASTM E648 CAN/ULC S-102.2	Class Bfl-S1 Class 1 FSV < 300; SDV < 500
Static Electrical Propensity	EN 1815	≤2.0kV Classified as 'antistatic'
Residual Indentation	ASTM F1914 ASTM F970 (Modified) ISO 24343-1	≤0.005" ≤0.009" (750psi) ≤0.20mm
Castor Chair (continuous use)	ISO 4918 (EN 425)	Suitable
Dimensional Stability	ISO 23999 (EN 434)	≤0.40%
Flexibility	ISO 24344 (EN 435) ASTM F137	(Method A) Pass 20mm ø 0.25" Pass
Thermal Resistance	ISO 12667	0.0525m ² K/W
Underfloor Heating		Suitable, max 27°C

Light Fastness	ISO 105-B02 (Method 3)	≥6
Furniture Leg	ISO 16581 (EN 424)	Pass
Resistance to Light	ASTM F1515	$\Delta E \leq 8.0$ - Meets
Resistance to Heat	ASTM F1514	$\Delta E \leq 8.0$ - Meets

Sustainability

	Standard	Result
GreenTag	LCA Rate Gold Plus	GreenRate level A
Specific EN 15804 EPD		Available
Recyclable		100%
Recycled Content		10%
REACH		Compliant
Indoor Air Comfort Gold		Eurofins certified product
FloorScore		Certified
Finnish M1 Classification		Certified
AgBB/ABG		Pass
Responsible Sourcing	BES 6001	Excellent

Acoustic Performance

	Standard	Result
Impact Sound Reduction	ISO 10140-3	19dB
Sound Transmission Coefficient	ASTM E90/E492	STC 57
Impact Insulation Class	ASTM E90/E492	IIC 56

Maintenance Performance

	Standard	Result
Resistance to Chemicals	ISO 26987 (EN 423) ASTM F925	Good resistance Good resistance

All Polyflor commercial sheet vinyl ranges provide a continuous, impervious and hygienic flooring solution which can be confidently cleaned in accordance with recommended maintenance procedures and approved maintenance products. The implementation of an effective cleaning regime is the most important defence against infection.



Polyflor Nordic • Kjelsåsveien 168 B, 0884 OSLO • Tel: +47 23 00 84 00 • Email: firmapost@polyflor.no • www.polyflor.no

Polyflor Nordic Sweden AB • Energigatan 9, 434 37 KUNGSBACKA • Tel: +46 300 158 20 • Email: info@polyflor.se • www.polyflor.se

Silentflor



RANGE SHADES



Eden Oak 8951
plank size in sheet: 200 x 1500mm
w/r 9671 LRV 37



Ridge Oak 8952
plank size in sheet: 200 x 1500mm
w/r 9672 LRV 34



Serene Oak 8953
plank size in sheet: 200 x 1500mm
w/r 9673 LRV 29



Upland Oak 8954
plank size in sheet: 200 x 1500mm
w/r 9675 LRV 33



Eden Oak Parquet 8955
plank size in sheet: 88 x 700mm
w/r 9677 LRV 40



Serene Oak Parquet 8956
plank size in sheet: 88 x 700mm
w/r 9678 LRV 30



Upland Oak Parquet 8957
plank size in sheet: 88 x 700mm
w/r 9679 LRV 33



Silver Oak 9951
plank size in sheet: 200 x 1500mm
w/r 9826 LRV 28



Sun Bleached Oak 9952
plank size in sheet: 200 x 1500mm
w/r 9825 LRV 31



Warm Limed Ash 9953
plank size in sheet: 166 x 1500mm
w/r 9832 LRV 34



Roasted Limed Ash 9954
plank size in sheet: 166 x 1500mm
w/r 9831 LRV 27



Classic Limed Ash 9955
plank size in sheet: 166 x 1500mm
w/r 9833 LRV 49



Blond Oak 9956
plank size in sheet: 167 x 1500mm
w/r 9820 LRV 28



English Oak 9957
plank size in sheet: 200 x 1500mm
w/r 9823 LRV 24



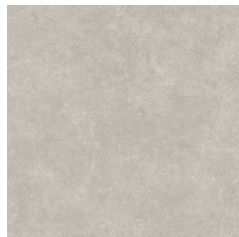
Honey Oak 9959
plank size in sheet: 167 x 1500mm
w/r 9821 LRV 22



Toasted Oak 9960
plank size in sheet: 167 x 1500mm
w/r 9822 LRV 18



Smoked Oak 9963
plank size in sheet: 200 x 1500mm
w/r 9827 LRV 11



Dove Cement 8958
w/r 9685 LRV 43



Pewter Cement 8959
w/r 9686 LRV 22



Sepia Cement 8960
w/r 9688 LRV 39



Pebble 8961
w/r 9691 LRV 29



Oyster 8962
w/r 9693 LRV 42



Light Grey Concrete 9965
w/r 9858 LRV 40



Cool Concrete 9966
w/r 9856 LRV 22



Warm Concrete 9967
w/r 9855 LRV 25

Silentflor



Dark Grey Concrete 9968
w/r 9857 LRV 13



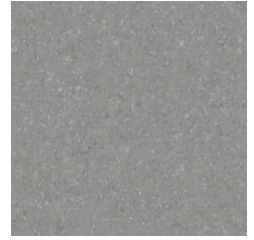
Light Industrial Concrete 9969
w/r 9860 LRV 35



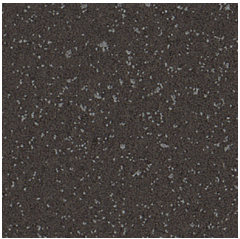
Dark Industrial Concrete 9970
w/r 9859 LRV 24



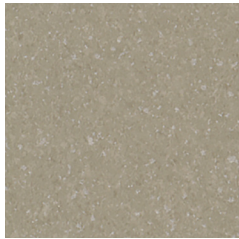
Copper Ornamental 9971
w/r 9861 LRV 19



Storm 9973
w/r 9845 LRV 26



Jet 9974
w/r 9842 LRV 8



Moleskin 9975
w/r 9841 LRV 28



Honey Beige 9985
w/r 9869 LRV 29



Autumn Rain 9986
w/r 9864 LRV 24

w/r - Weld Rod

LRV - Light Reflectance Value

NCS - Natural Colour System

Polyflor Nordic • Kjelsåsveien 168 B, 0884 OSLO • Tel: +47 23 00 84 00 • Email: firmapost@polyflor.no • www.polyflor.no

Polyflor Nordic Sweden AB • Energigatan 9, 434 37 KUNGSBACKA • Tel: +46 300 158 20 • Email: info@polyflor.se • www.polyflor.se

© At the time of writing and publication of sheet, all the information is specified correctly. The company reserves the right to change the specifications of this product at any time without prior notice to third parties.